

OFFICE PARTITIONS
IBI T-MELA
DAR ES SALAAM
June 30th, 2023



Design folder

Keen Construction Ltd.

DESIGN CONCEPT

The partitions are designed as to create two centralities within the office space.

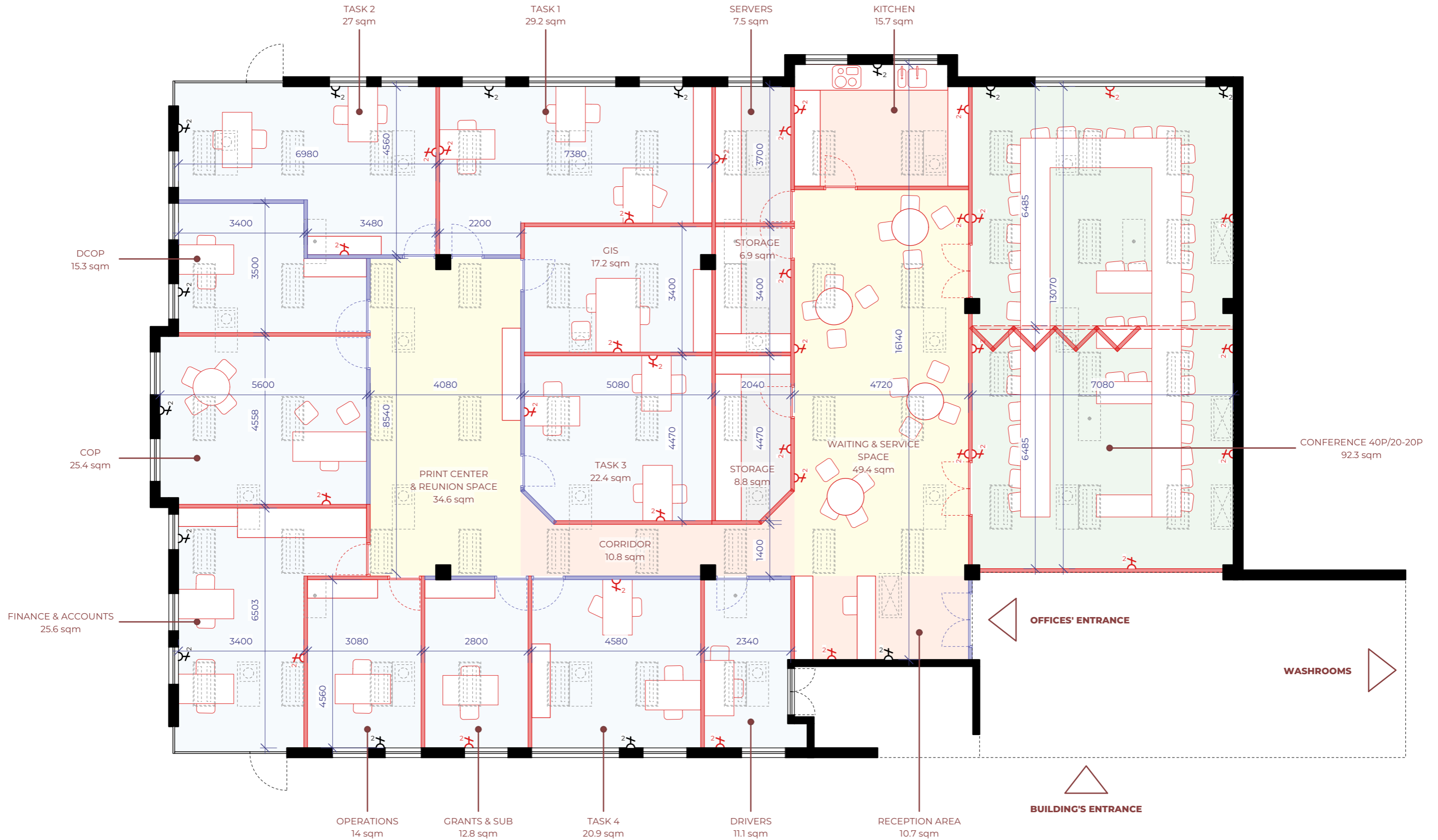
The first one, on the side of the entrance, links the reception, the conference room and the kitchen, as well as the service rooms such as the server room and the storage room. It is the first space that users encounter and is thus generous. It provides a space to meet during a break, after a conference or to wait for a meeting.

The second centrality, on the side of the offices, serves as distribution for the office spaces, as printers' center and as informal meeting point.

As the existing ceiling is low (2.5m), the partitions are built until the top, to avoid noise perturbations between offices, notably during presentations. No existing ceiling fixture has to be moved, and every room except the grants and subcontracts' office has an AC inlet.

The transparency of the partitions allows visual contacts between colleagues, a feeling of openness and more light. In between offices and where needed, frosted glass is installed to allow light to come in. White filling panels are installed on the walls where projection is needed.





- existing
- new
- partitions type 1 (frosted/opaque)
- partitions type 2 (clear)

- existing/new double switch socket
- smoke detector
- AC in/out
- lamps

legend

IBI T-MELA Office PARTITIONING PLAN Mlimani City

project name

ground floor plan

drawing type

1:100
dinA3

scale and size

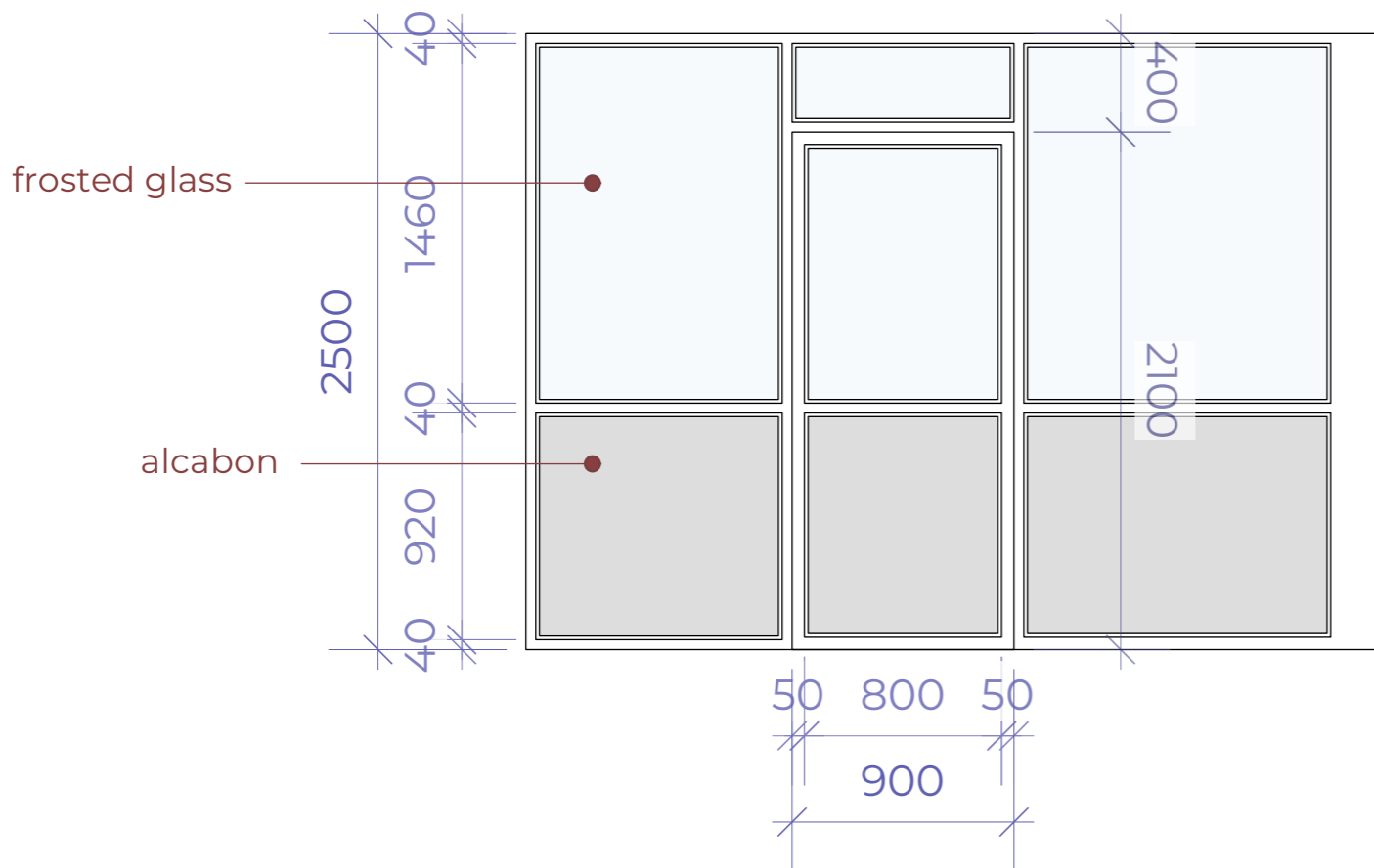
26/06/2023 first proposal
28/06/2023 update
30/06/2023 update

date and modification

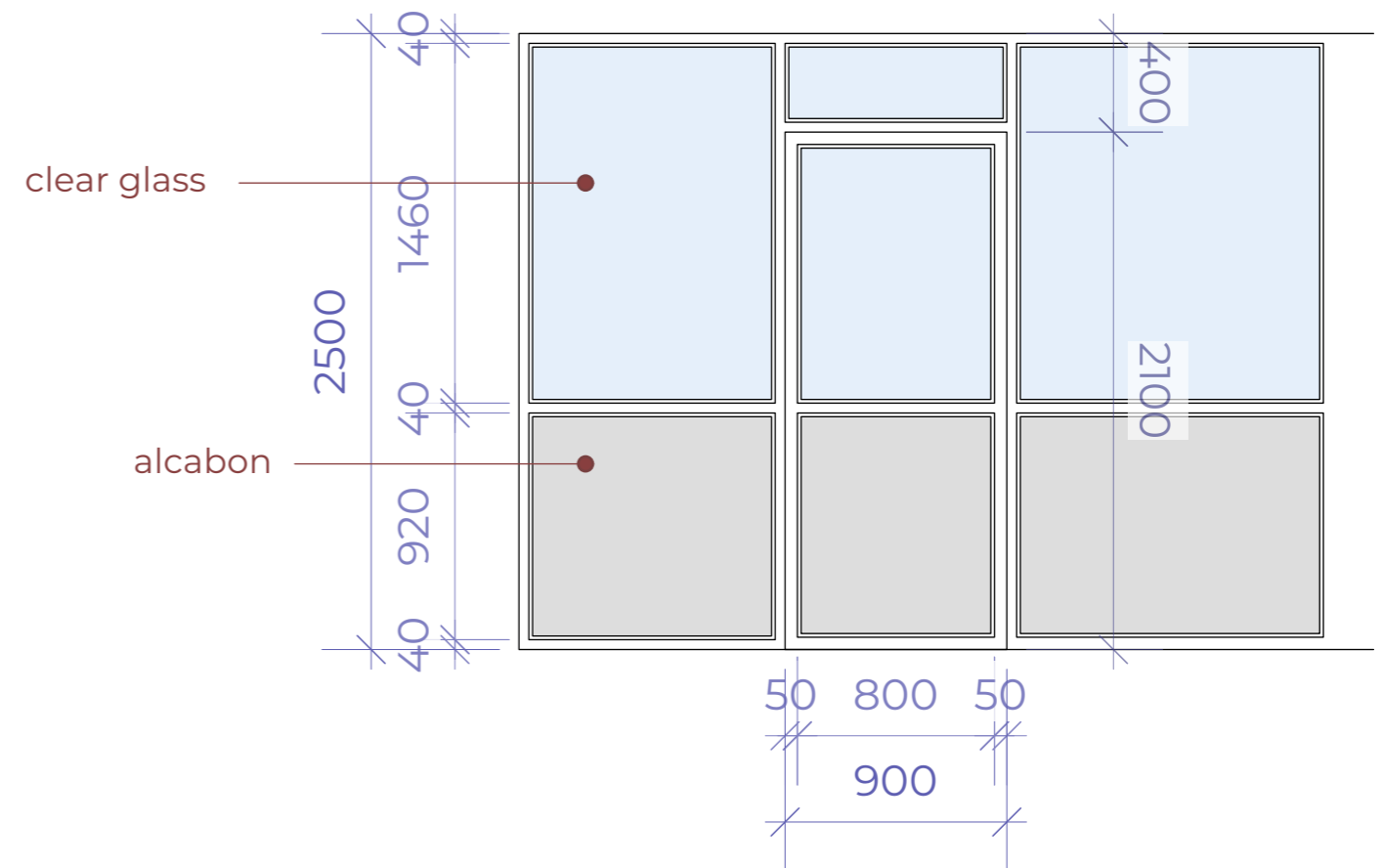
L. Bernasconi
E. Minja

authors

partitions type 1
(frosted)



partitions type 2
(clear)



- existing
- new
- partitions type 1 (frosted/opaque)
- partitions type 2 (clear)

- existing/new double switch socket
 - smoke detector
 - AC in/out
 - lamps
- legend

**IBI T-MELA Office
PARTITIONING PLAN
Mlimani City**

project name

elevation partitions

drawing type

1:30
dinA3

scale and size

26/06/2023 first proposal
28/06/2023 update
30/06/2023 update

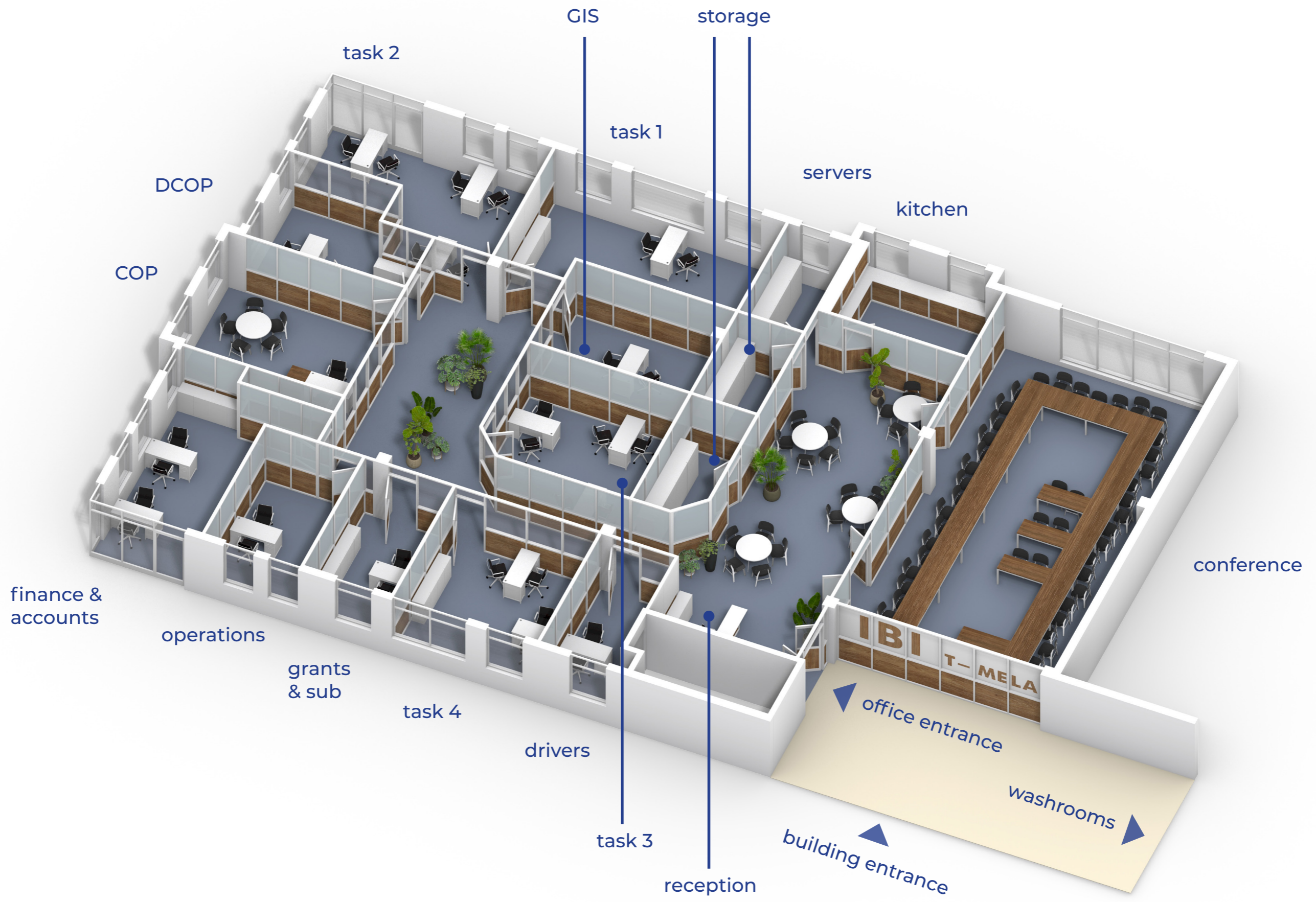
date and modification

L. Bernasconi
E. Minja

authors



3D SKETCH



REFERENCE FOR MATERIALS





